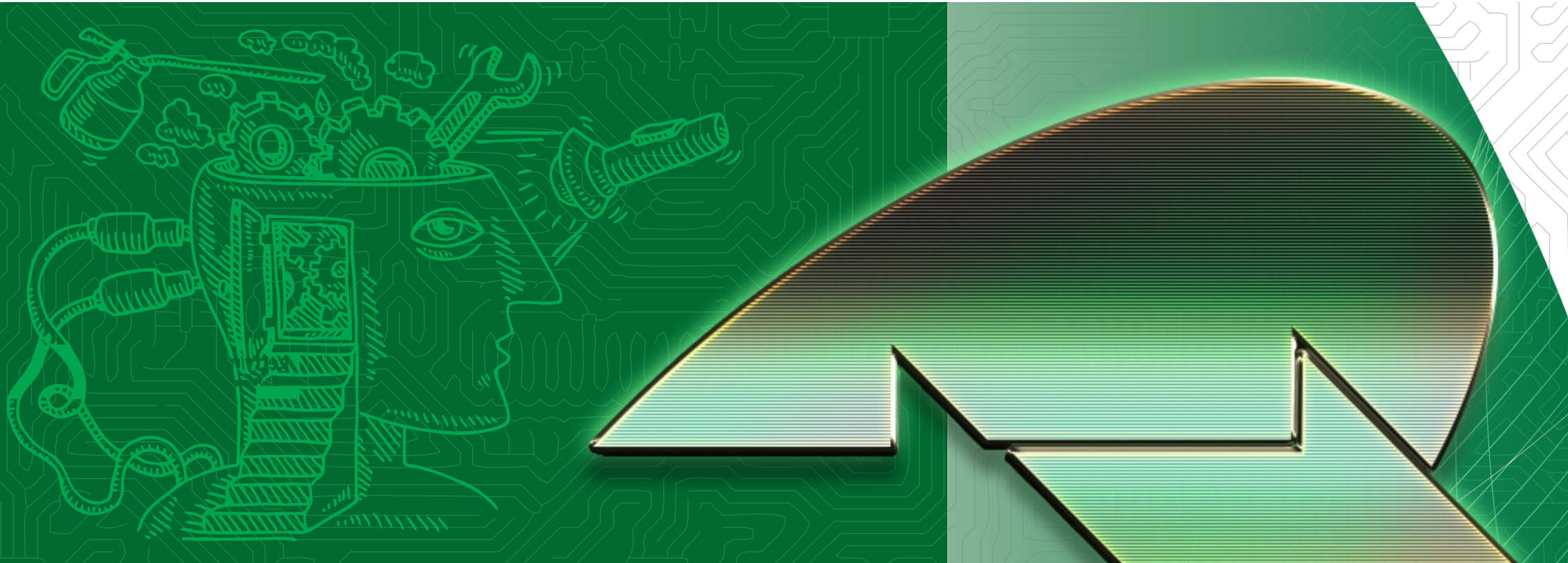


INNOVATION MOVING FORWARD



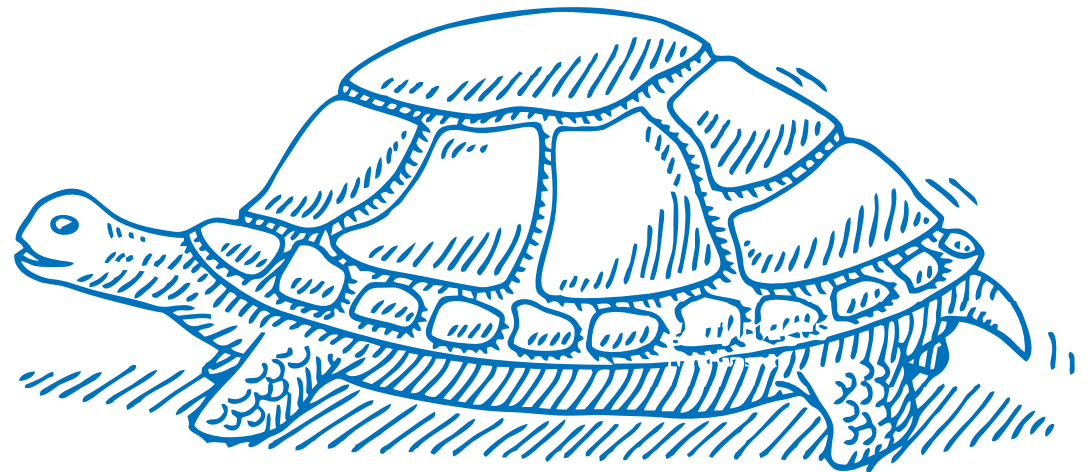
BEAM GROUP

ABOUT US

We, at Beam, are inspired by the tremendous scientific heritage of Aryabhata & Brahmagupta, (mathematicians) to Sushruta & Charaka (Physicians). These great men were the pioneer of fundamental sciences in the field of astronomy, trigonometry, algebra, decimal system, surgery & physics. However, we are still behind the world in the field of applied sciences. Recently, the likes of Vijay Shekhar Sharma, Sachin Bansal, Binny Bansal, and the likes have utilised technology to improve the lives of millions of Indians.

We are a team of young enthusiasts, from renowned engineering colleges and business schools of India (NSIT, DCE, IIM Calcutta), intend to lead Beam Group as an Indian technology-oriented company providing ingenious and pragmatic solutions to local requirements and challenges, benefitting the large population of our country. We want to make ourselves useful to our country, building on the foundation of education and entrepreneurial skills learned over years.

In the current volatile, uncertain, complex and ambiguous (VUCA) business environment, we believe the agile and nimble tortoise will win the race, and, we plan to be that Agile and Nimble Tortoise ■



OUR VISION

To become the most preferred choice of our customers in all of our business sectors.



OUR MISSION

To continuously strive for excellence and create value for all stakeholders.



CORPORATE RESPONSIBILITY

We care for people, planet and profits.

A Beam, we believe we have an obligation to our future generations. We should leave this planet as divine as we received it, for our children and their children. We pledge to prioritize this responsibility while doing our business.

Thus, we have adopted the idea of PPP bottom-line i.e. care for People, Planet and Profits.

We take full responsibility for recycling the e-waste generated of our products. We encourage users to dispose of the used products at our nearest service centre where the e-waste is responsibly recycled ■



ELECTRONICS CUSTOM DESIGN & MFG SOLUTIONS

The Product Development Challenge

Currently, more than half of electronic product companies in North America outsource design, and the number is growing day by day.

The decision to outsource depends on a variety of factors such as

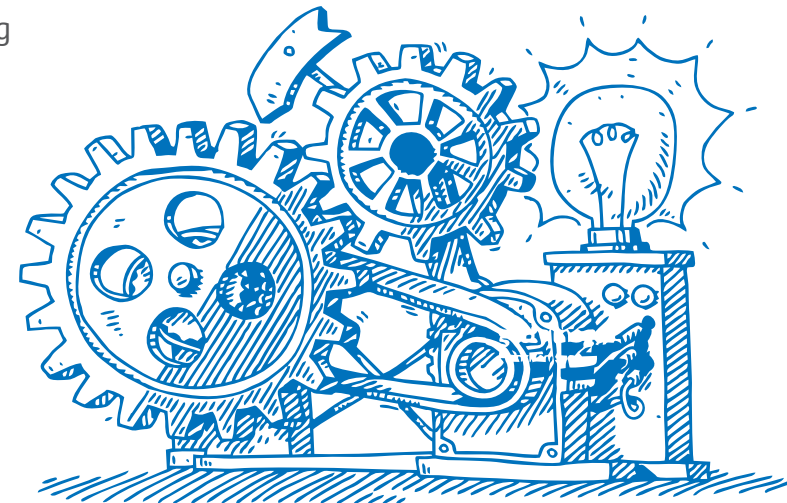
- The availability of in-house resources
- The complexity, area of design, and product development schedule.

Depending on how far the client has advanced in the product development process, for example, one may have only a faint idea of product features, whereas other may already have a schematic or partly working product, clients may subcontract part or the whole, from product specification to engineering analysis, schematic design, PCB layout, prototyping, software development, and post-production support and revision.

Outsourcing design activity help accelerates product development timelines by providing access to specialist design expertise. It optimizes product development costs while not letting the firm to stretch too thin which help to get the products to the market faster, decreasing the firm's opportunity costs.

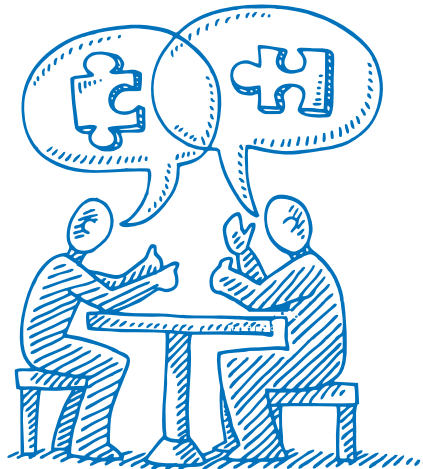
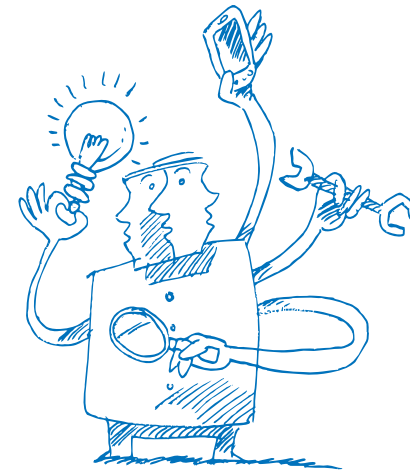
And, with access to cutting-edge design and technology, we are well positioned to help our clients design, build and sell better.

We, at Beam Infotech, provide niche electronic components design and manufacturing solutions to OEMs in consumer electronics and automotive industry.



Why Choose Us ?

- 6+ years of experience in custom electronics design and manufacturing.
- We employ a structured product development process to optimize design outcomes.
- We ensure a clear view of the progress of each design project.
- All our design projects are well supported by volume manufacturing.



Our Experience

We have delivered

- Mobile charging solutions for an Indian automotive ancillary OEM.
- An audio output solution for an Indian consumer durable OEM ■

ELECTRONICS SUPPLY CHAIN SOLUTIONS

Business' Challenge

Unfinished goods and services now represent the majority of trade flow between nations as a result of the geographic slicing up of processes and production. This is the result of the comparative advantage that countries enjoy due to the scale of economies and demographic factors.

Increasing supply chain complexity with decreasing access to information about supply chain and greater need for higher quality and speed at a lower cost poses new risks associated with the advent of the global supply chain.

How We Help

BEAM INFOTECH help global automotive multinational corporations **identify, quantify, prioritize and mitigate risk in their supply chain** for better decision making. **We help design sourcing strategies** for our client's supply chain and help them to **shorten their time to market**, hence enhance the reliability of their products and improve their earnings.

Why Choose Us ?

BEAM INFOTECH has more than 6 years of experience in managing supply chains of international companies. Our **competent and efficient SCM services** encompass products like PCBs, Passive Components (resistors, capacitors, and diodes), Active Components (microcontrollers, LEDs and transistors.) and other similar types of electronic components for the automotive industry. Furthermore, we truly believe that SCM has two essentials: service cost and the product cost and both aspects are intricately linked. The hard work, sincere effort and **expertise** of our team **higher quality products at competitive costs** helps us provide **higher quality products at competitive costs** with exceptional service levels at all times.

Why believe In Our Words ?

Well, our hard work speaks for us. We take the pride of being a **crucial part of the supply chain** of some of the top premium brands such as



on the development of switch assembly of passenger vehicles. ■

LIGHTING SOLUTIONS (SOLAR & CONVENTIONAL)

The Power Challenge

Electricity is the key resource for human development. BUT, It is as scarce a resource for inhabitants of rural areas as for urban poor who can't afford it despite availability.

Presently, the high renewable energy cost doesn't justify the initial development.

The Obvious Solution

Usage of **Renewable Energy**, since electrification with renewable energy is much more efficient because most renewables have a steam cycle with low losses (fossil power plants usually have losses of 40 to 65%).

But how to execute that obvious but not so simple Solution ?

We, at Beam Infotech, have indigenously **designed and developed Solar Powered Electricity Solutions** named **SeRuL** (Solar Energy Based Rural Lighting) which is a Solar Powered Device. It's integrated battery can power our table fan, 3 light bulbs and a usb powered device for over 12 hours on a single charge.

It supports AC power too along with Solar energy. It is highly suitable for Rural Homes, Street Hawkers, Small Shops, Remote Commercial Units and such similar places.

We also offer Solar Street Lights which are highly suitable for rural roads, parks, forest and by rural and urban poor alike.

What Makes SeRuL Apart ?

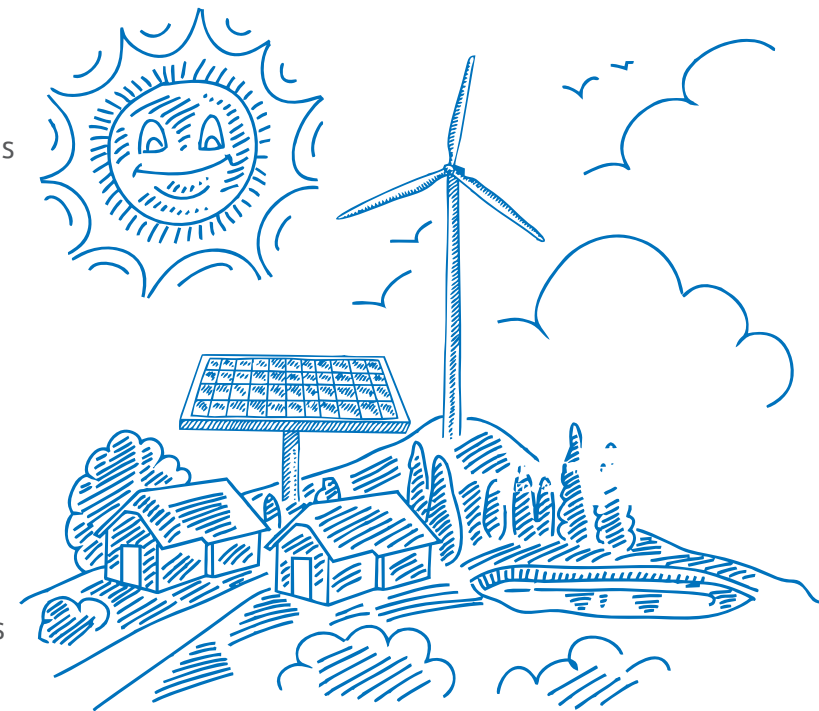
Our SERul system will empower the rural and urban poor to uplift their standard of living and help them to reduce their cost of living and live a dignified life.

- **Highly customizable** lighting solutions to suit varied local needs of people living in remote villages, forests as well as on hilly snow covered areas.
- **Easily installation** in hinterlands and mountainous terrains saves the cost of grid electricity transmission, distribution, and consumption.
- We offer **motion sensor** control AC LED lights and **energy efficient** AC LED bulbs which will help conserve electricity.

Fully designed and developed in India

Our Belief

“Sustainable and Responsible development” is the way forward to help rural and urban poor realize the benefits of advancement in technology. And, it is our endeavour to achieve scale by designing solutions for these billions across the world ■



CHARGING SOLUTION FOR BATTERY POWERED DEVICES



Lithium-ion batteries are conventional in many consumer devices such as smartphones, laptops and tablets, providing power in a small size container. However, their increased power also means a higher **risk of overheating and fire** because more energy is directed into a smaller space.

Our **Raydium** Brand offers mobile car and wall chargers range which are innovative safer solutions for fast charging of the batteries using industry leading **Qualcomm's Quick Charging 2.0 & 3.0 protocols**.

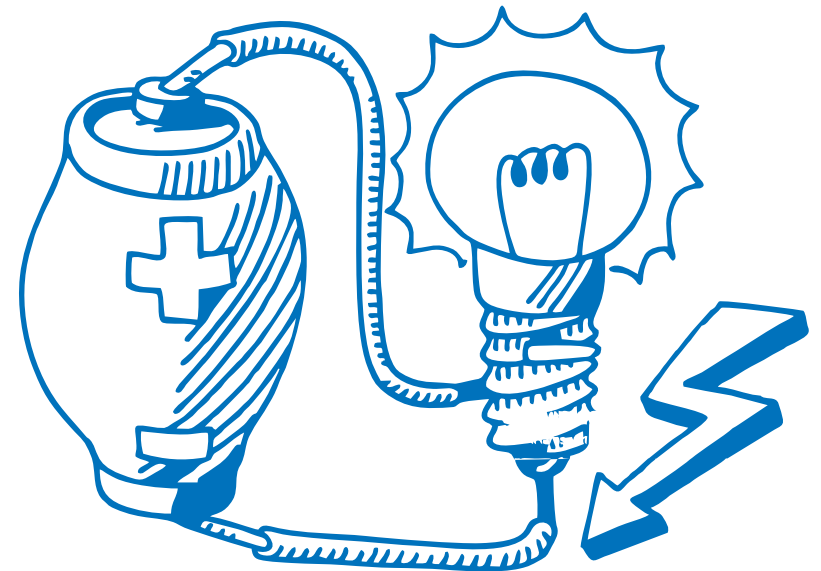
We are currently working on a universal fast charger for Laptops and for personal and public mobility solutions.

Raydium is an electronics brand which makes high quality products which serves to the individual end customers, businesses and to the government.

The Beam Group launched the Raydium Brand to enhance the innovation that connects us to the general population, exercises and experiences we love. Raydium products are eminent for their durability and simplicity of use.

Raydium's main focus always remain on quality and safety of its products, which is why all the Raydium's products go through an intensive quality control procedure before it leaves from our factory belt ■

www.raydiumelectronics.com



NOVEL SOLUTIONS

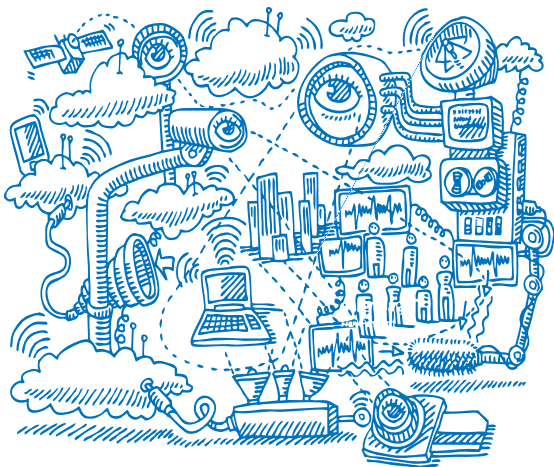
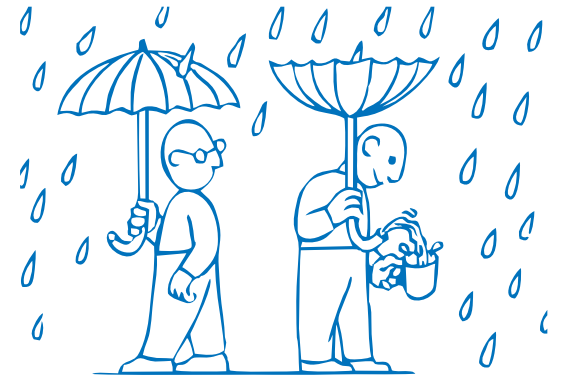
Power Theft & Distribution Losses Problem

According to the annual Emerging Markets Smart Grid: Outlook 2015 study by the Northeast Group, LLC, the world loses US\$89.3 billion annually to electricity theft. The highest losses were in India at \$16.2 billion followed by Brazil and Russia.

The primary cause is direct hooking from the power line, bypassing the energy meter by illegally injecting a foreign element into the energy meter.

Our Solution

Our patented technological solution uses an encoder and decoder. The transmitter encoder at the distribution transformer level encodes power lines. The outbound power from the transmitter encoder is usable only through a receiver decoder. Any attempt to bypass the receiver decoder will make the power unusable. Thus, illegal tapings from the power line will be deterred.



City Surveillance Solution For Citizens' Safety

Urban dwellings need a smart city surveillance solution to detect unauthorized people and vehicles. The early detection and prevention of crime with the use of high definition cameras, network video recorders and artificial intelligence enabled analytics is the next frontier in this connected world.

How we help

We at Beam are defining the architecture for easy adoption, effective implementation and efficient execution of the city surveillance system. We are well aware of the potholes vis-à-vis potential abuse and infringement of citizens' privacy ■

NICHE RETAIL SERVICES

Attention is the new currency. In this age, where e-commerce giants dominate the headlines, the physical sensory experience that the store environment provides is crucial for brand engagement and in delivering the products and services. The experience is what stimulates purchases and drive customer loyalty.

Our Airport Retail Stores

Beam operates multiple stores at domestic and international departure terminals of Delhi, Mumbai and Hyderabad airports.

The merchandise on offer includes luxury apparel brand (Lacoste), premium shoe brand (Hush Puppies) and global electronics brand (Samsung).



Hush Puppies®



These stores are the best example of our ability to manage efficient operations while offering best consumer experience at the operationally sophisticated, sensitive and challenging retail sites. The retail operations are managed by an independent team and led ably by a motivated and passionate leader with guidance from the senior management team.

Our Next Step

We are gearing up for the second phase of growth with the opening of new formats, new franchisee stores across select locations in niche areas like airports, malls and high streets. We aim to grow this vertical to offer the best experience, value and service ■

AVIATION SUPPLY CHAIN SOLUTION

Southeast Asia is experiencing rapid growth (10%) in air passengers with at least half of the region's 10 countries recorded double-digit growth. India, posted the fastest full-year growth rate in RPKs (Revenue Passenger Kilometres) at 17.5% for 2017 followed by China (13.3 %).

However, it is also a region of intensifying competition, with several markets suffering from overcapacity. Yields have been steadily declining, resulting in extremely low-profit margins, despite low fuel prices and relatively high load factors. This increases pressure on airlines to reduce costs related to aircraft **MRO** (aircraft maintenance, repair and overhaul).

Currently, only 5-10% of the MRO work for domestic scheduled carriers is carried out in India with the rest outsourced to third-party service providers outside the country.

We at Beam, offer consulting services to aircraft operators in Southeast Asia to **help them optimize the MRO costs.** We also **build strategies for sourcing spares and help maintain a lean inventory** to reduce the working capital and improve financial Return Ratios ■



AMMUNITION SUPPLY CHAIN SOLUTION

Shooting has got India four Olympic medals since the 2004 Athens Games. Olympians Abhinav Bindra, Gaurav Narang, Vijay Kumar and Rajyavardhan Rathore, have inspired many youngsters to take up the sport.

However, aspiring shooters have to rely on imported arms and ammunition due to limited private sector participation, technical skill and manufacturing capability in India. The multiplicity of players and countries involved in imports increases the complexity manifold. The restrictive nature of firearms import and export combined with the stringent requirement of licenses and permissions means fewer participants in this supply chain. Thus, the aspiring shooters and their mentors usually have a difficult time in procuring the shooting gear.

We at Beam, are leveraging our knowledge and expertise in managing the global supply chain to solve this perennial problem of our aspiring Olympians. The industry is still in the nascent stage and is dominated by unorganized players. We at Beam, feel confident, that we are well positioned to contribute to the sporting success of our country athletes. **Our promise to these athletes is**, *“You aim at the stars, and let us shoot down the dark clouds of sourcing supplies for you”* ■

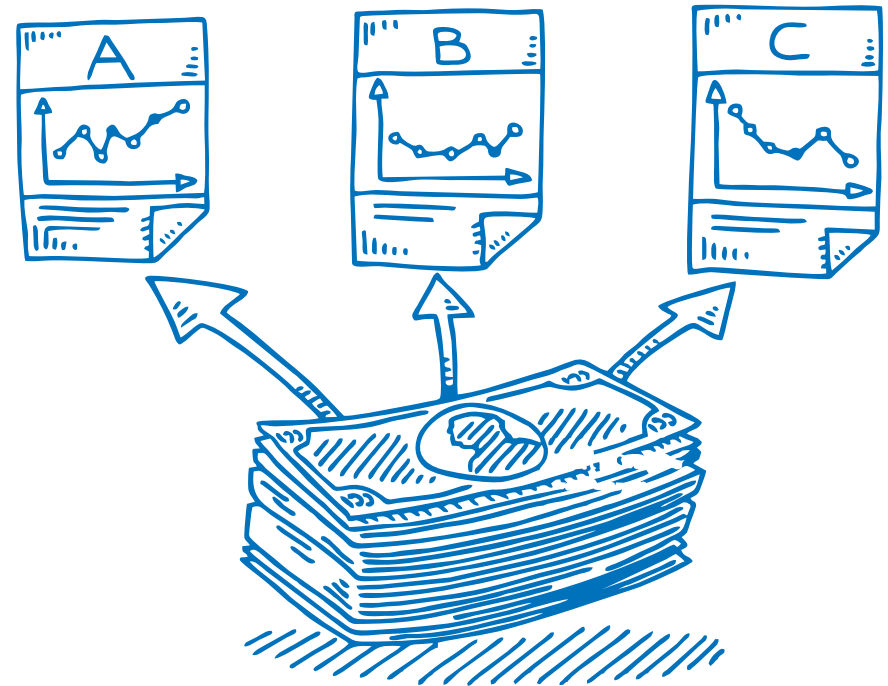


PRIVATE WEALTH MANAGEMENT

When we started on our entrepreneurial journey, we were all successful in our corporate jobs. However, what gave us the strength to pursue our dreams was our Financial Independence. We at Beam have an unshakeable belief that **Financial Independence is the true independence.**

We have a journey familiar to most of our clients – a modest background – focus on education – focus on a good job – focus on securing the future. We embarked on a journey from a secure future to a future of abundance and an informed transition from Savers to Investors. We wish to create an Alter Ego of our clients, where their present income is earned by their Alter Ego liberating them to pursue their PASSION.

Our method involves analysing the assets and liabilities of the client and run a financial health diagnostic check. This helps us illustrate the return on lifetime savings and examine the adequacy of life, medical and retirement corpus. Then we propose an Investment Management plan using Equity/Stocks for higher returns as per the need and risk appetite of the client ■



BEAM GROUP

INNOVATION MOVING FORWARD

Head Office: India

Plot No. B-35, Cyber Media Building, Sector 32
Gurugram - 122001, Haryana, India.

Email: enquiry@beamgroup.in

Phone: (0124) - 4052735, 9599040000

Website: www.beamgroup.in

Hong Kong Office

Flat 2A1-A7, Palsang Industrial Bldg.
16 San On Street, Tuen Mun, N.T.
Hong Kong